

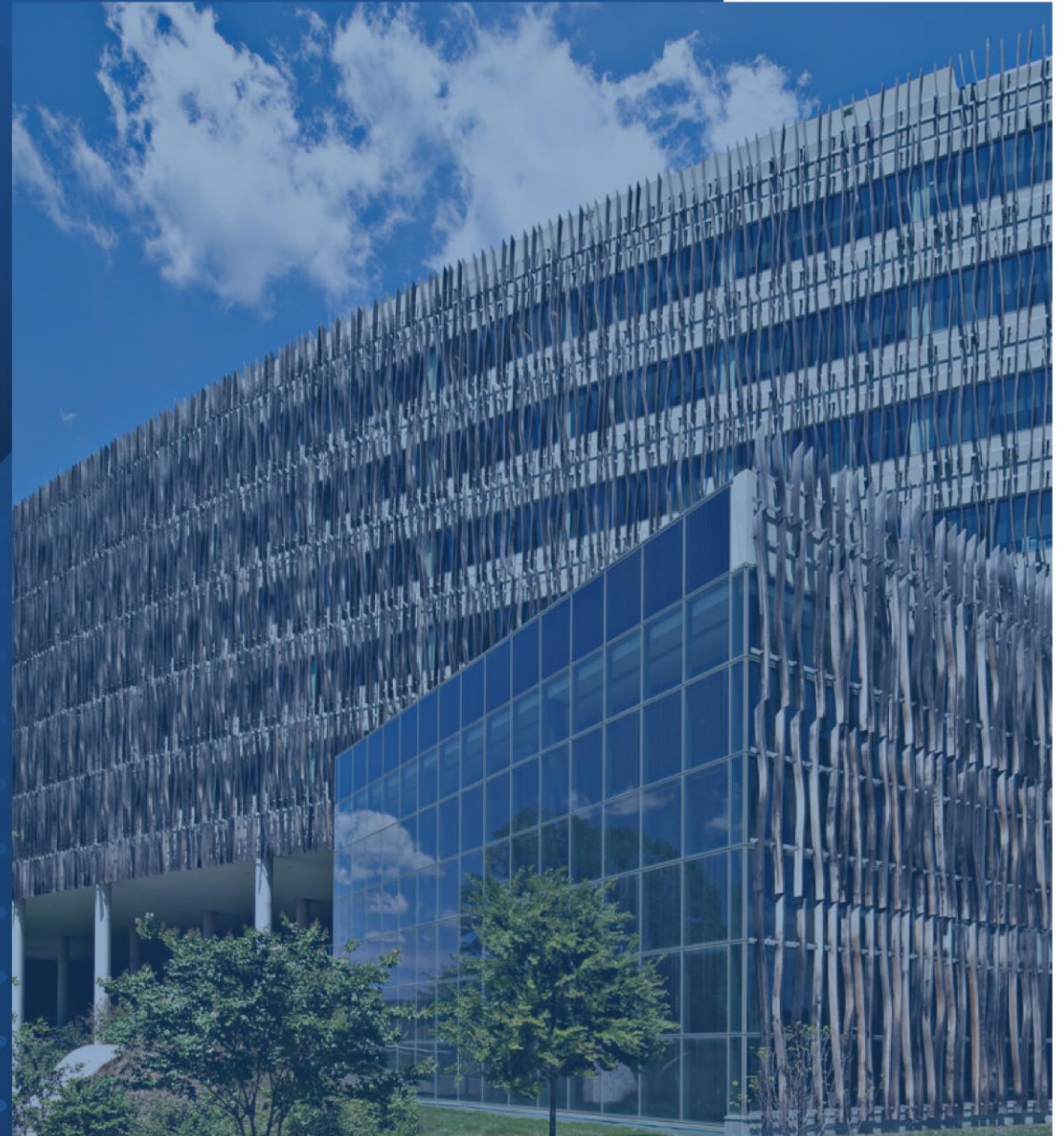
US Census Bureau Updates October 2024

- Navajo Nation Addressing Pilot
- Block Count Change Viewer
- 2026 Census Test Overview
- Upcoming Demographic Surveys

Tamia Morris, Decennial Specialist
Dorothy McKinney, DNRO Geographer
Theo Sheppard, HQ Geographer



Denver Regional Office
U.S. Census Bureau



Navajo Nation Addressing Pilot

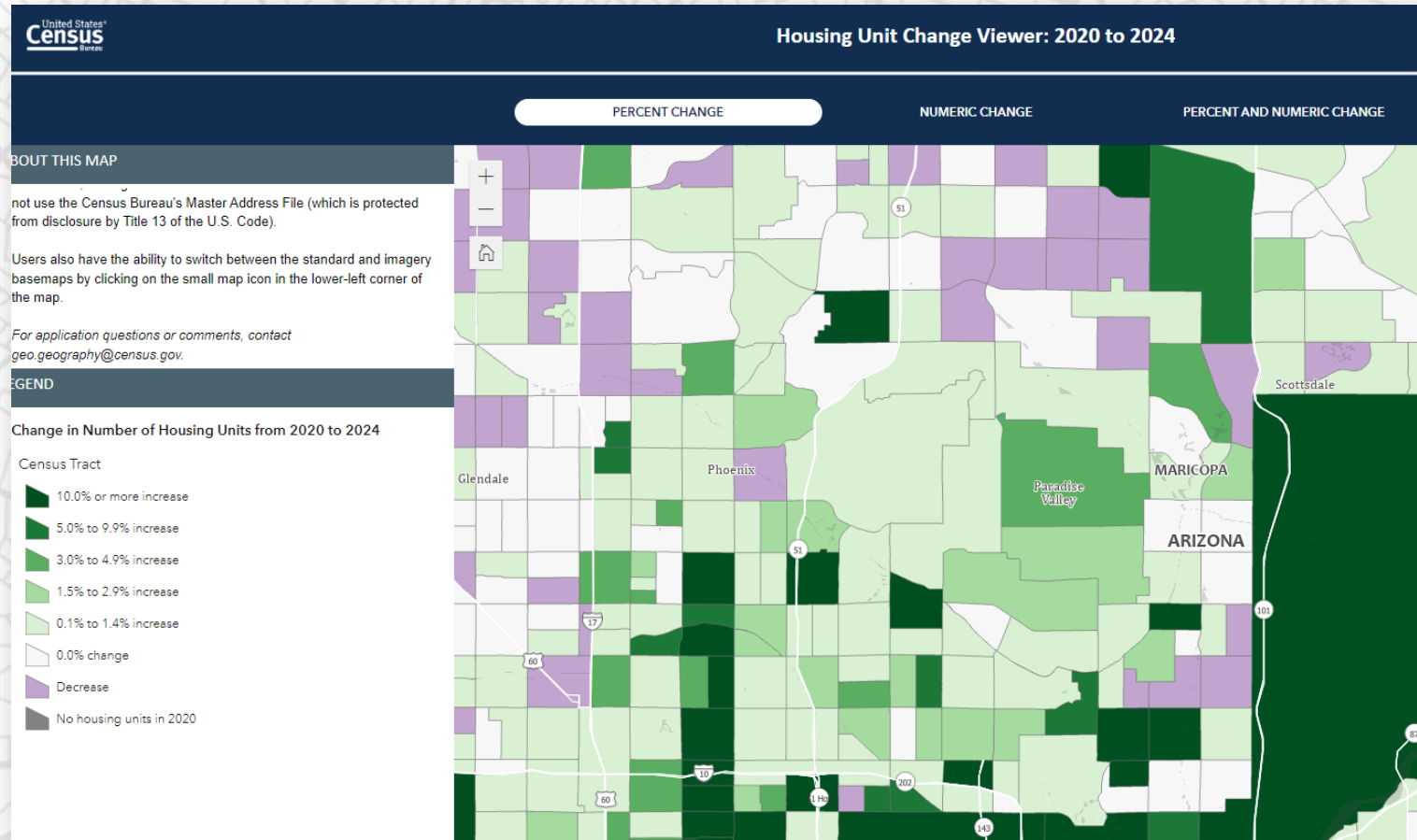


Geographic Program Updates



Block Count Change Viewer

- State, County, Census Tract, Block Group, and Block views
- Housing unit and group quarters counts
- Compare counts from 2020 and 2024
- Interactive visualization featuring data from [Address Count Listing Files](#)



Block Count Change Viewer

LUCA will be here before you know it...

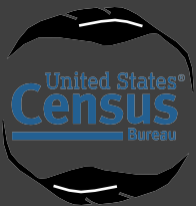
This is a great tool for local governments to start to evaluate which areas may need review.

[Block Count Change Viewer](#)



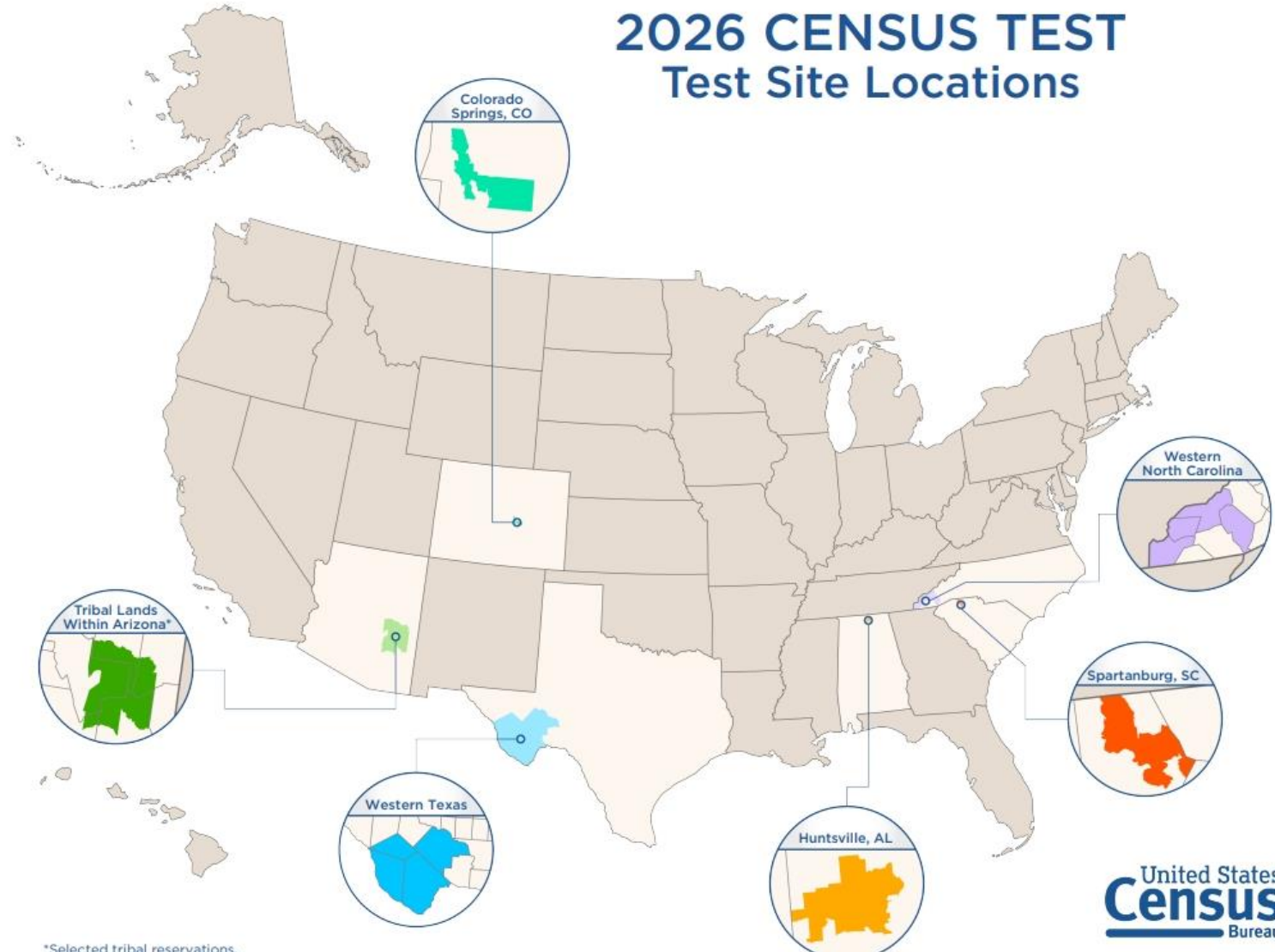
Questions?

Planning for 2030: *2026 Census Test*



2026 Census Test

2026 CENSUS TEST Test Site Locations



*Selected tribal reservations.

2026 Census Test

- As our first major field effort in planning the 2030 Census, the 2026 Census Test gives us an opportunity to evaluate enhanced processes and methods that we would like to implement for the next decennial Census.
- Through this field test, we will evaluate proposed changes and innovations in six operational areas to improve feasibility and effectiveness. All of these will include aspects that either directly or indirectly help us enumerate hard-to-count and historically undercounted populations. The Census Bureau remains highly committed to looking to find more and better ways to reach and count these historically undercounted and hard-to-count populations in the 2030 Census.
 - **Those six operational areas are:**
 - Self-Response
 - In-Field Enumeration
 - Group Quarters Enumeration
 - Communications, Partnerships, and Engagement
 - Cross Operational Support and Infrastructure
 - Response Processing

2026 Census Test

- **Self-Response** - We're testing ways to make it easier for the public to respond.
- **In-Field Enumeration** - We're testing a consolidated and improved approach to collecting data in-person from households. This operation will be called in-field enumeration.
- **Group Quarters Enumeration** - In 2026, we will explore new ways of counting people who live in group quarters, including using a new survey instrument and improved contact strategies
- **Communications, Partnerships and Engagement** - For communications, partnerships and engagement, we will test technology to identify key locations where we can hold community events to raise awareness about and participation in the census.
- **Cross Operational Support and Infrastructure** - In 2026, we'll test enhancements to several operational functions that need to work together across operations for a successful census.
- **Response Processing** - The 2026 Census Test will be our first opportunity to test enhanced methods of data processing. The new method will integrate data processing with data collection and analytics.
- **2026 Census Test Site Selections** - The Census Bureau plans to conduct 2026 Census Test operations in six locations. The Tribal Lands Within Arizona site includes: Fort Apache Reservation, home to the White Mountain Apache Tribe, and San Carlos Reservation, home to the San Carlos Apache Tribe.

Tribal Lands Within Arizona

(Fort Apache Reservation, home to the White Mountain Apache Tribe and San Carlos Reservation, home to the San Carlos Apache Tribe)

Key selection criteria

- ✓ Rural area with
 - ✓ Historically undercounted population
 - ✓ Historically low census self-response
- ✓ Non-mailable addresses
- ✓ Seasonally vacant housing units

Optimal for testing

Mobile Questionnaire Assistance

Recruiting and hiring

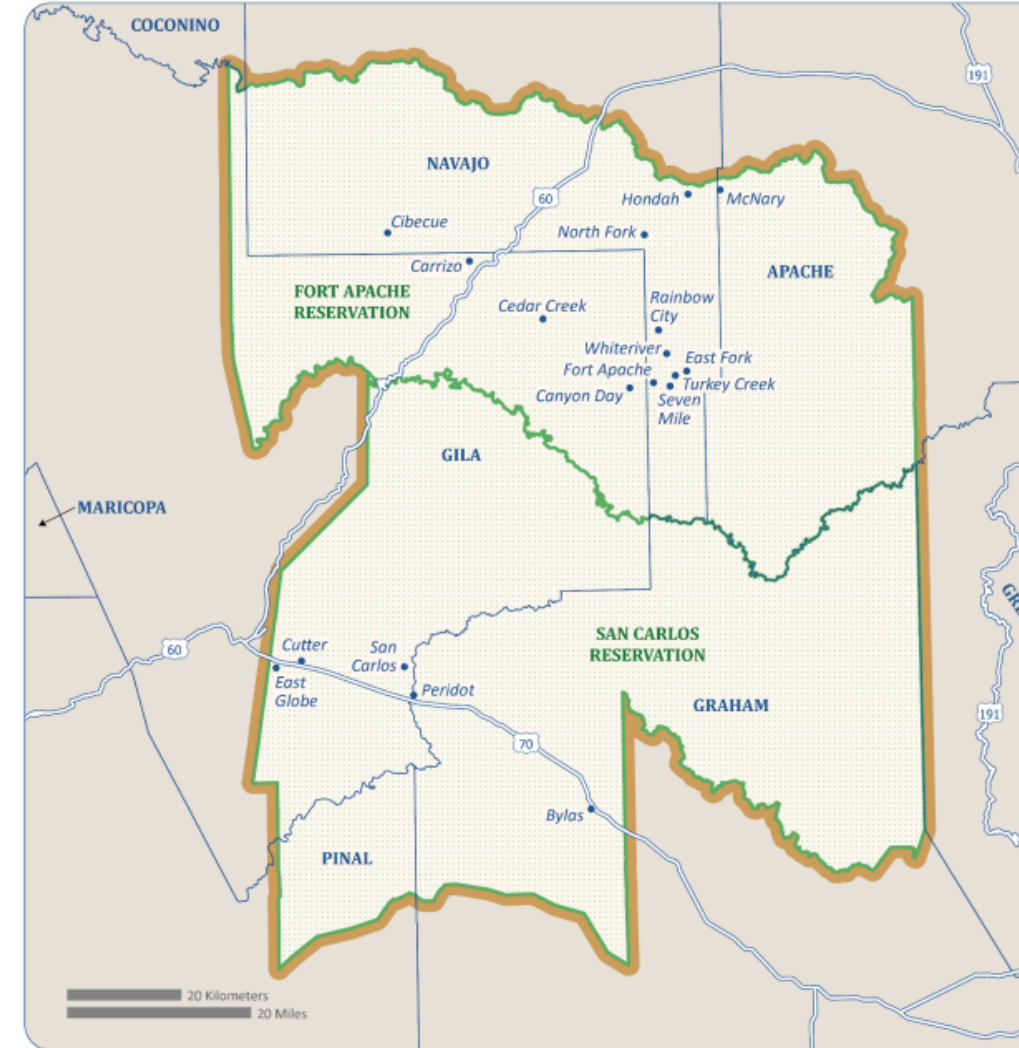
Shipping materials and equipment directly to field staff's home addresses in remote areas

Newly consolidated In-Field Enumeration procedures in areas with hard-to-count and historically undercounted populations

New partnership procedures developed specifically for tribal outreach and communications



Location of site within Arizona





Questions?

Demographic Survey Updates



American Housing Survey Redesign

History of the AHS

- The most comprehensive housing survey conducted in the U.S.
- Funded and directed by HUD, conducted by the Census Bureau.
- Began in 1973 as the Annual Housing Survey, conducted biennially since 1981.
- Renamed the American Housing Survey in 1984.
- The publication of the 2023 AHS later this year will mark 50 years of AHS providing information on America's housing.

American Housing Survey Redesign

Increasing field costs and declining response rates have led HUD to consider alternative data collection strategies for the AHS.

It's long been discussed that a continuous data collection period similar to 'current surveys' as opposed to the 'one time' field model would be more effective, primarily because:

- 1) it eliminates the expensive, time-consuming Regional Office AHS ramp-up costs every two years, and
- 2) puts in place a more experienced AHS workforce with a constant workload.

American Housing Survey Redesign

AHS Continuous Data Collection Goals

- Primary Goal – Continuous field data collection, collected all year, every year. This is expected to stabilize field survey costs and even out the distribution to Census of HUD's Congressional funding.
- Secondary Goal – Increase the frequency of national and metro AHS estimates, allowing for more current estimates and better comparability to other data sources which collect annual data (surveys such as ACS, and key estimates such as homeownership/vacancy rates).

American Housing Survey Redesign

AHS Timeline



Survey of Income and Program Participation (SIPP)

The main objective of the SIPP has been, and continues to be, to provide accurate and comprehensive information about the income and program participation of individuals and households in the United States.

The purpose of the survey is to:

- analyze the impact of existing tax, transfer, and related programs;
- estimate future program costs and coverage;
- assess the effects of policy decisions on programs;
- provide improved statistics on the distribution of income and wealth in the nation; and
- contribute to the development of measures of the economic and social well-being of the population of the United States as a whole.

Survey of Income and Program Participation (SIPP)

SIPP Timeline





THANK YOU!
